

N.W. 1/4  
SECTION 22, T.6N., R.1W., S.L.B. & M.

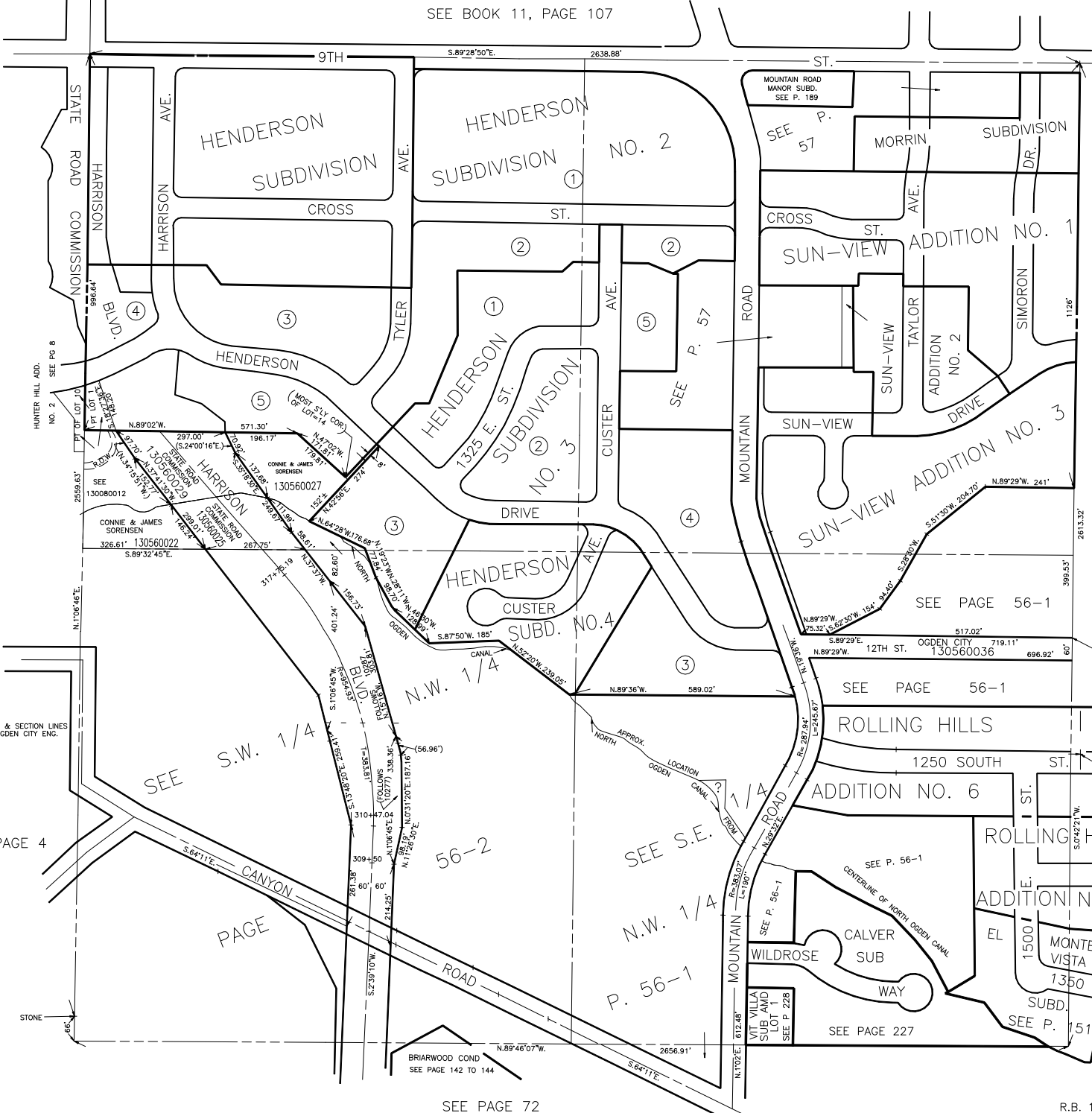
ALSO SEE PAGES 56-1, 2

TAXING UNIT: 25

IN OGDEN CITY

SCALE 1" = 200'

SEE BOOK 11, PAGE 107



NOTE: STREET & SECTION LINES DATA FROM OGDEN CITY ENG. DEPT. PLATS.

SEE PAGE 4

13

SEE PAGE 72

SEE PAGE 45

R.B. 10-66